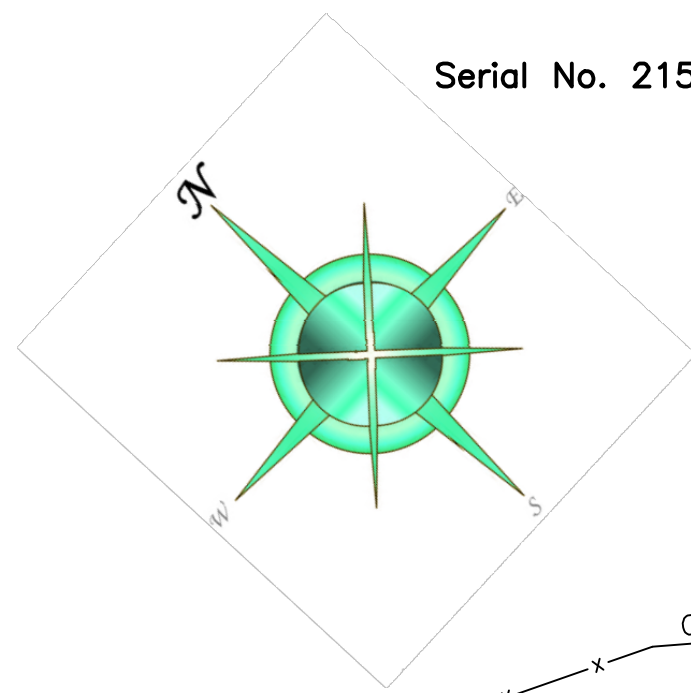
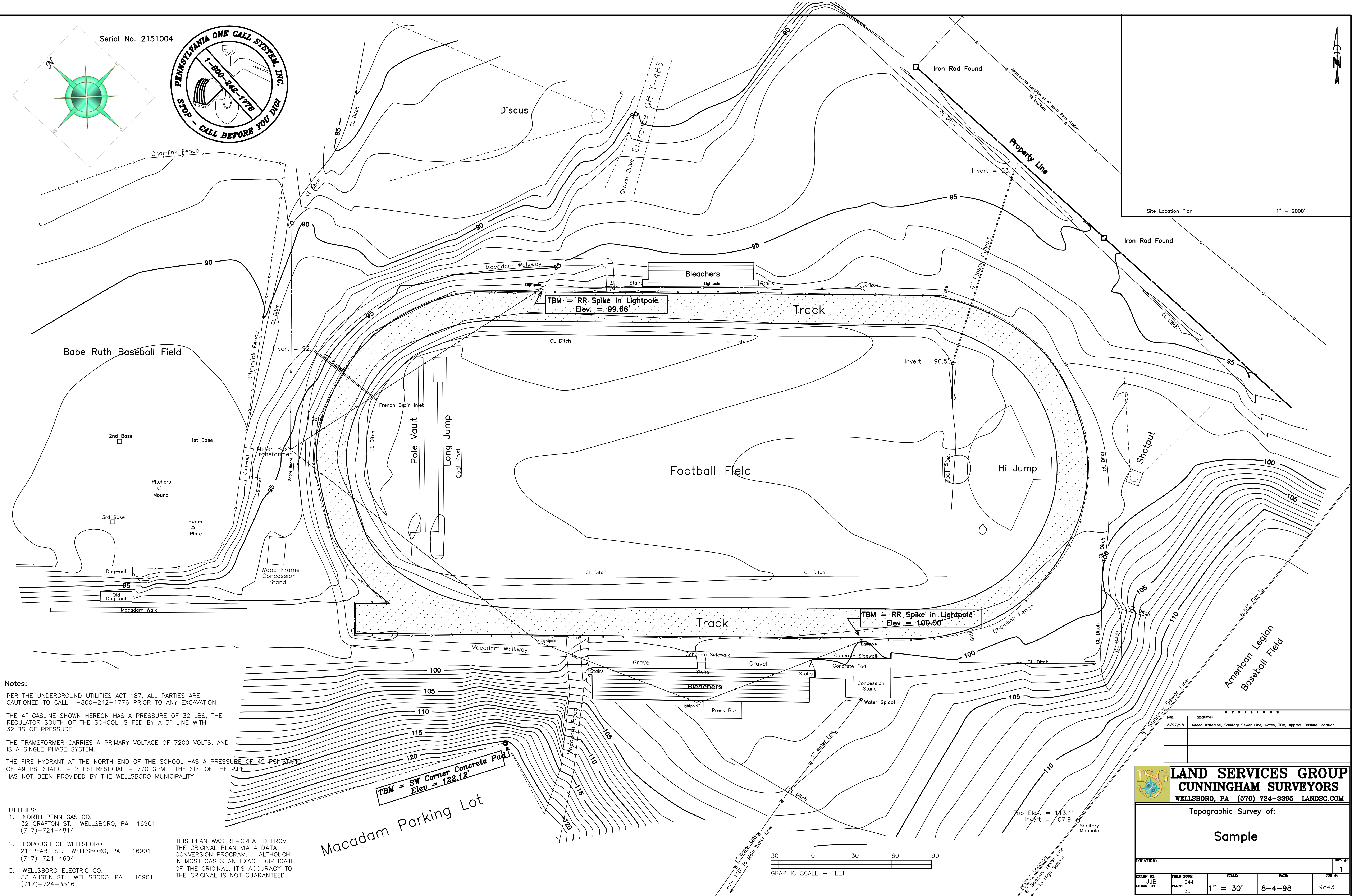


Serial No. 2151004



Site Location Plan 1" = 2000'



Notes:

PER THE UNDERGROUND UTILITIES ACT 187, ALL PARTIES ARE CAUTIONED TO CALL 1-800-242-1776 PRIOR TO ANY EXCAVATION.

THE 4" GASLINE SHOWN HEREON HAS A PRESSURE OF 32 LBS, THE REGULATOR SOUTH OF THE SCHOOL IS FED BY A 3" LINE WITH 32LBS OF PRESSURE.

THE TRANSFORMER CARRIES A PRIMARY VOLTAGE OF 7200 VOLTS, AND IS A SINGLE PHASE SYSTEM.

THE FIRE HYDRANT AT THE NORTH END OF THE SCHOOL HAS A PRESSURE OF 49 PSI STATIC - 2 PSI RESIDUAL - 770 GPM. THE SIZE OF THE PIPE HAS NOT BEEN PROVIDED BY THE WELLSBORO MUNICIPALITY

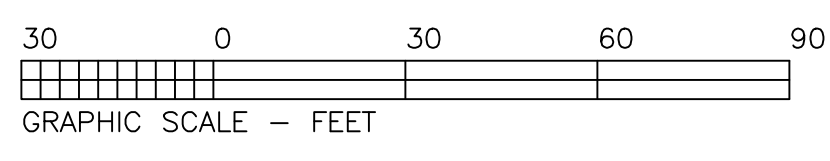
- UTILITIES:**
- NORTH PENN GAS CO.
32 CRAFTON ST. WELLSBORO, PA 16901
(717)-724-4814
 - BOROUGH OF WELLSBORO
21 PEARL ST. WELLSBORO, PA 16901
(717)-724-4604
 - WELLSBORO ELECTRIC CO.
33 AUSTIN ST. WELLSBORO, PA 16901
(717)-724-3516

THIS PLAN WAS RE-CREATED FROM THE ORIGINAL PLAN VIA A DATA CONVERSION PROGRAM. ALTHOUGH IN MOST CASES AN EXACT DUPLICATE OF THE ORIGINAL, IT'S ACCURACY TO THE ORIGINAL IS NOT GUARANTEED.

**TBM = SW Corner Concrete Pad
Elev = 122.12'**

**TBM = RR Spike in Lightpole
Elev. = 99.66'**

**TBM = RR Spike in Lightpole
Elev = 100.00'**



REVISIONS	
DATE	DESCRIPTION
8/27/98	Added Waterline, Sanitary Sewer Line, Gates, TBM, Approx. Gasline Location

**LAND SERVICES GROUP
CUNNINGHAM SURVEYORS**
WELLSBORO, PA (570) 724-3395 LANDSG.COM

Topographic Survey of:

Sample

LOCATION: _____ JOB #: 1

DRAWN BY: JUB FIELD BOOK: 244 SCALE: 1" = 30' DATE: 8-4-98 JOB #: 9843

CHECK BY: _____ PAGES: 35